

# Brief Manual of V-30SCT/30ST

## # V-30SCT/30ST Introduction:

This model is the instant and single-output coffee vending machine, it has 3pcs powder canisters for loading 3 kinds of instant powder material, machine can make 3 kinds of drinks, each drink can have Hot/Cold choices, the Red means Hot and the Blue means cold. Machine is installed with Electronic cooling system. Being installed with Payment system (Multi-coins acceptor default , Multi-bills acceptor and Integrated cashless payment system optional) and Automatic cup dispenser, 30ST is very good for business and commercial use.

Machine has 3 ways of Water Supply:

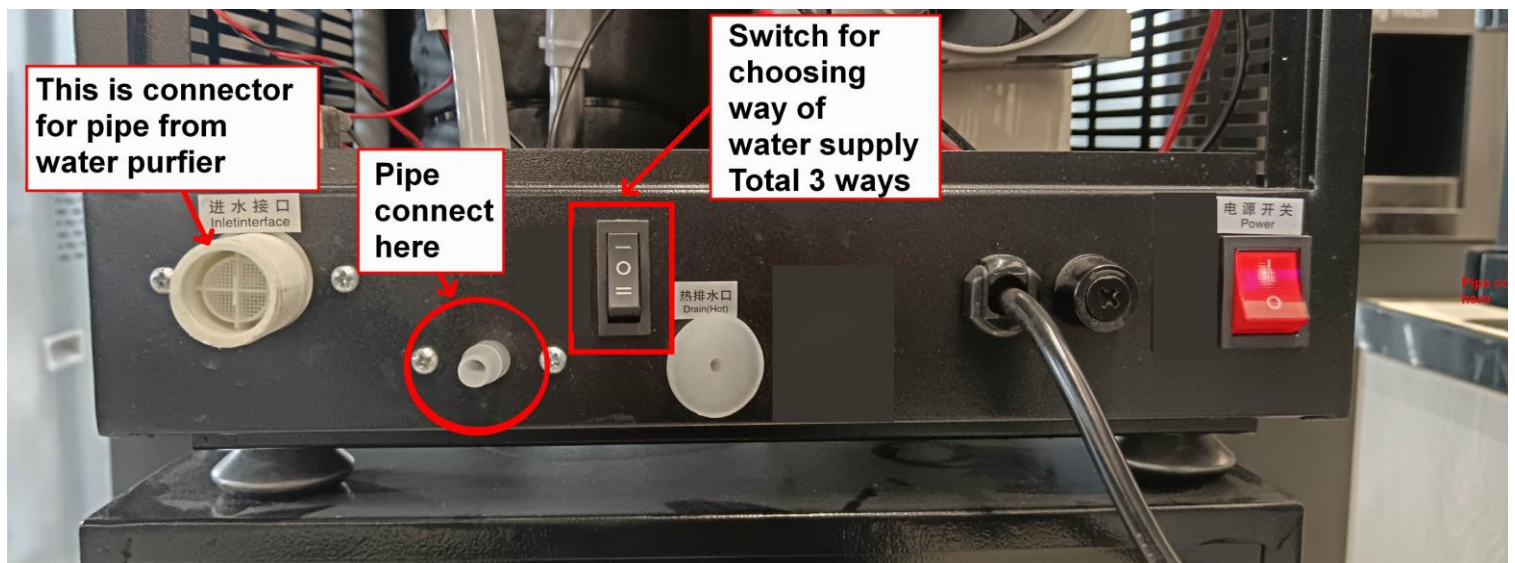
**1, Put bottled water on the top of machine Up-Side-Down by the Top water interface**

**2, Put bottled water down and use Pipe connect The pump inside machine pumps water into top.**

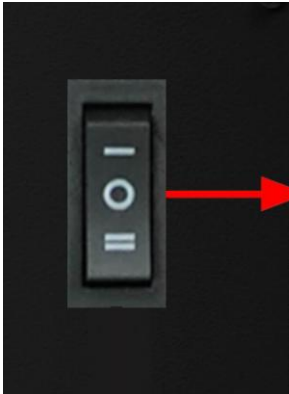


**Cabinet is not compulsory.**

**3, Use the water from Water Purifier directly**



# Brief Manual of V-30SCT/30ST

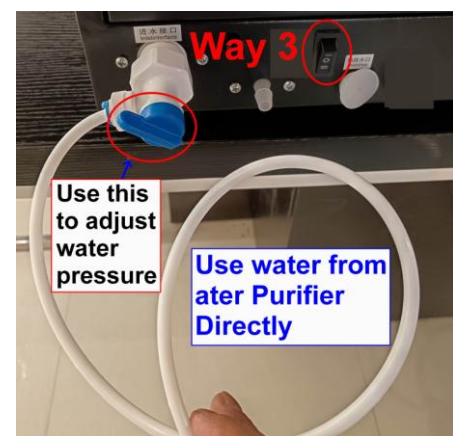
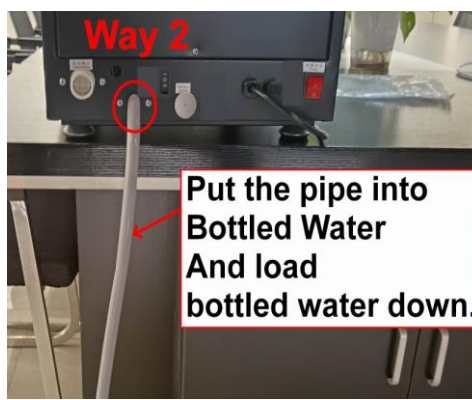


Water supply way choice switch

- Down Pumping system **Way 2**

= Down Water purifer **Way 3**

O Top water bottle up-side-down **Way 1**



## Detailed Specifications:



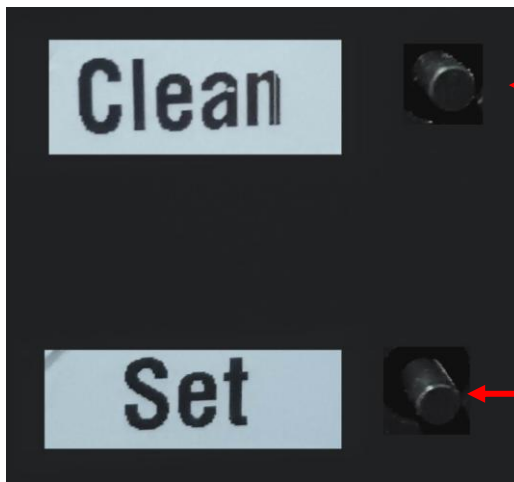
Certificate:	CE,RoHS
Voltage/Power:	220~240V/50Hz1600W; 110~120V/60Hz 1600W
Powder Canister:	3 Pcs/1500ml each
Drinks Supply:	3 Hot/Cold drinks, total 6 selections
Boiler/Heater:	0.8L
Cooling System:	Electronic cooling system 0.8L/65W
Operating Button:	6 smart touch buttons
Display Screen:	Digital screen
Payment system:	Multi-coins acceptor (default); Multi-bills acceptor (optional, installed in the matched cabinet); Credit card reader (Optional Pulse protocol)
Cup dispenser:	Automatic cup dispenser for 6.5~9.0 Oz paper cups, the cup mouth size 73~74mm; Single cup bucket
Resetting Work:	Adjust temperature, taste, cup size by requests
Water Supply (3 ways):	Bottled water on top ( up-side-down) OR water from Purifier OR Bottled water at bottom by pumping system
Suitable Material:	Any kinds of instant powder material

# Brief Manual of V-30SCT/30ST

This file can teach you how to do the setting work, please do according to these steps one by one. Thank you!!

**Open the door and find this**

**# Automatic self-cleaning work:  
Open the door and find this**

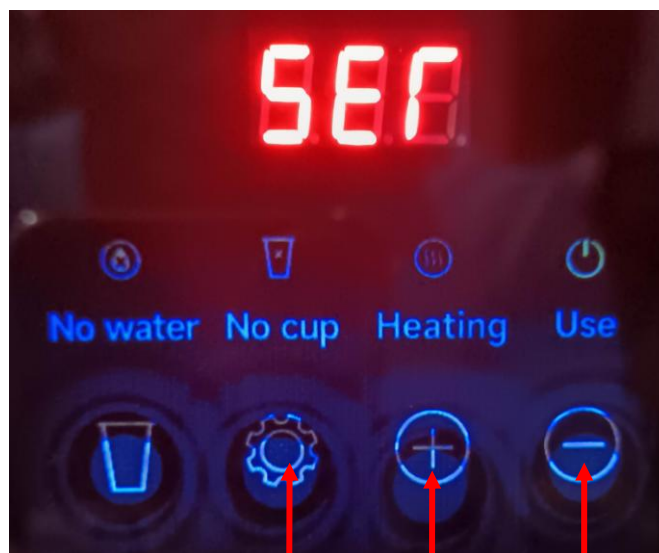


**Long-Pressing** this black button, machine starts the Self-cleaning work:

The hot water coming out automatically to clean the drink pipe/Mixer/Drink exit one by one.

Please do the Automatic self-cleaning work 2 times a day.

**Short-Pressing** this button, then machine enters the "SET" condition, then you can do the setting work step by step.



Increase

Setting Button

Decrease

# Brief Manual of V-30SCT/30ST

## #Short-touch "Setting Button" 1 Time

Digital Screen showing



## #Short-touch "Setting Button" 2 Times

Digital Screen showing



**"H" and "L" mean High temperature and Low temperature.**

H.85 means the Heater/Boiler stops heating work when the Temperature thermistor/probe measures the temperature of water inside reaches 85 degree; L.50 means starts heating when reaches 50 degree. Normally we set High temperature 85~90 and Low temperature 50~55.

## #Short-touch "Setting Button" 3 Times

Digital Screen showing



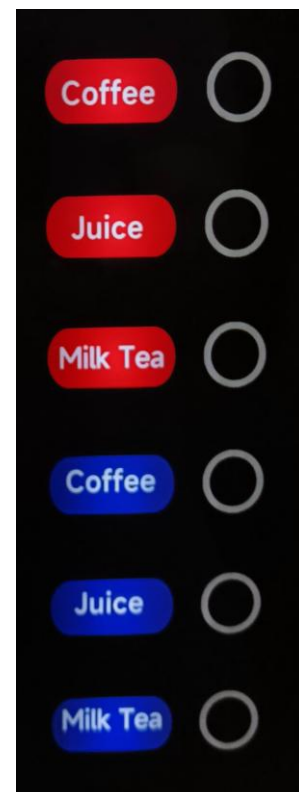
Then you can Short-touch the drinks' button to Set each drink's price

If Short-touch the 2<sup>nd</sup> drink (Red Juice)

Digital Screen showing



Then Short-touch the "-" the "Decrease" button, showing the Present price of Red Juice is 1. You can Short Touch "+" to increase OR "-" to decrease. If set it "0", then Free. If set it "2", then need To insert coins to make digital screen show "P02", then can have this cup of hot juice.



**Red**  
means  
Hot  
Drinks

**Blue**  
means  
Cold  
Drinks

You can short-touch other drinks' button to set other drinks' prices  
All these are same work as above.

## Explanation of machine's price logic:

The price does not mean the Real Price, it means the number of Pulse signal. P02 means the machine makes this cup of drink when it receives 2 pulse signals.

IF 1 pulse signal equals to 1 Pesos, then the price is 2 Pesos;

IF 1 pulse signal equals to US 25cents, then the price is \$.50

IF 1 pulse signal equals to CNY 1, then the price is 2 Yuan

What is the value of 1 pulse signal? It is based on the Coins, when we set the coin-acceptor, we must confirm 1 pulse signal equals to the value, it is the basis.

# Brief Manual of V-30SCT/30ST

#Short-touch "Setting Button" 1 Time,  
Digital Screen back to



#Short-touch "Setting Button" 1 Time,  
Digital Screen shows



It means to Set the 3 hot drinks' Parameters of Water Volume. Short-Touch the Hot Drink's, for example Short-touch "Red Coffee", then the Digital Screen show

Then Short-touch the "-" the "Decrease" button, showing the Present Parameter of Water Volume of Red Coffee is 10. You can Short Touch "+" to increase OR "-" to Decrease Red Coffee's water volume.



You can change the other Hot Drinks' water volume by this way. After having done this,

#Short-touch "Setting Button" 1 Time,  
Digital Screen back to



#Short-touch "Setting Button" 1 Time again,  
Digital Screen Show



It means to Set the 3 Cold drinks Water Volume. You can Short-touch each of the 3 Cold drinks button to SET its cold water volume.

After having done this, Short-Touch  
"Setting Button" 1 Time, Digital  
Screen back to



**The way is same  
as the way of setting  
Hot drinks water.**

**Please remember** IF you want to make a bigger cup, need to increase the Water Volume; IF you want to make a smaller cup, you need to decrease the Water Volume. 1 number increase decrease means water volume increases/decreases 20ml

# Brief Manual of V-30SCT/30ST

---

#Short-touch “Setting Button” 1 Time again,  
Digital Screen Show



It means to Set the 6 drinks’ **Parameters** of powder materials. For example, Short-touch Red Coffee, the Digital Screen showing



Short-touch the “-“ the “Decrease” button, showing the Present Powder material Parameter of Red Coffee is 5. You can Short Touch “+” to increase OR “-“ to Decrease Red Coffee’s Powder material parameter.

You can Short-touch other drinks’ button to SET these drinks Parameter of powder material, it is same as the way above.

**Please remember** – Increase the Parameter of powder material to add more powder material to make this cup of drink, so the drink’s taste becomes stronger; On the contrary, Decrease the number of powder material to make drink’s taste lighter.

After having done this, #Short-touch “Setting Button”  
again and again, The Digital Screen showing accordingly



# Brief Manual of V-30SCT/30ST

---



Until Digital Screen show  
Then Short-Touch “+”



This is to **SAVE** the  
Setting work that you  
have done.

**Very important!!!!**

Digital Screen showing  
Automatically AND then  
Back to “P.00”



**Then you have finished the Setting Work!!**

**Thank you very much!!**